

DIETHYL PHTHALATE

Reach Registration Number:

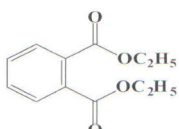
01 - 2119486682 - 27 - 0001

Chemical Formula : $C_{12}H_{14}O_4$

Molecular weight : 222.24

CAS Registry Number : 84-66-2

Molecular Structure :



Description: Diethyl phthalate is a diethyl ester of phthalic acid. DEP is used as a plasticizer in consumer goods, including plastic packaging films, cosmetics, solvent for fragrances, a surface lubricant in food and pharmaceutical packaging, and in tubing used for medical purposes.

SPECIFICATIONS:

Characteristics	Units	Guaranteed		Typical
Colour, pt-co-scale	[APHA]	Max	30	25
Odour	---	---	Odorless	Odorless
Acidity as Phthalic acid,	Wt . %	Max	0.01	0.0005
Specific gravity @ 25°C	---	---	1.115-1.118	1.116
Viscosity @ 25°C	CPS	---	8 -12	9.26
Refractive index @ 25°C	---	---	1.500-1.505	1.502
Moisture content	Wt . %	Max	0.30	0.25
Ester content	Wt . %	Min	99.00	99.50
Purity by Gas Chromatography Min	Wt . %	Min	99.00	99.50

PACKAGING:

<p>Full Container Load</p> <p>1. HMHDPE & GI Barrels. Net Weight - 225 Kg</p> <p>2. IBC. Net Weight - 1000 /1125 Kg</p> <p>Full Container Load</p> <p>1. Packed in 225 Kg, HMHDPE Barrels 80 Barrels x 225 kgs = 18 MT/FCL</p> <p>2. Packed in 225 Kg, GI Barrels 80 Barrels x 225 kgs = 18 MT/FCL</p>	<p>3. ISO container - 20 -24 MT net</p> <p>4. Packed in 1.0 Mt IBC 18 IBC X 1.0 Mt - 18 Mt</p> <p>5. Packed in 1.125 Mt IBC 18 IBC X 1.125 Mt - 20.25 Mt</p>
--	--

Health Hazard:

Diethyl Phthalate has low acute toxicity, low eye and skin irritation and sensitising potential. It is recommended to wear Safety Goggles while handling this material . Always refer to the Material Safety Data Sheet (MSDS) for detailed information on safety

Fire and Explosion Hazard:

Diethyl Phthalate may occur under fire condition,so wear full protective clothing and self-contained breathing apparatus with full face piece operated in pressure -demand or other positive pressure mode.It is essential to store or handle the material in a well ventilated area from any source of ignition

Storage:

Diethyl Phthalate should be stored in a cool, dry, well ventilated area away from sources of ignition. Wear safety goggles, rubber gloves and apron while handling the material.

Products and Applications:**Diethyl Phthalate is used -**

- In perfumery as a fixative and solvent.
- As a solvent for nitro-cellulose and cellulose acetate in manufacturing of varnishes & paints.
- In the manufacture of insecticides and mosquito repellants
- As additive in polysulfide rubber to reduce shear strength & for easy mixing
- As a dye accelerate for triacetate dyes
- As alcohol denaturant
- In solid rocket propellants

**For further details please contact
Thirumalai Chemicals Limited**

Factory: 25-A, Sipcot Industrial Complex Ranipet - 632 403 Tamil Nadu, India. Phone: +91-4172-244441 /2/6/8 Fax : +91-4172-244308 e-mail: settu@thirumalaichemicals.com Contact: Mr. D.Settu	Mumbai Office: "Thirumalai House" Plot No.101-102, Road No.29, Sion (East) Mumbai-400 022, Maharashtra, India. Phone :+91-22-43686200 Fax : +91-22-2401-1699 / 7869 e-mail : thirumalai@thirumalaichemicals.com	Chennai Office: 3 rd Floor, RR Tower - IV, T.V.K. Industrial Estate, Guindy Chennai - 600 032 Tamil Nadu, India. Phone:+91-44-40123333 e-mail : soni@thirumalaichemicals.com Contact: Mr. Soni S. Muricken
--	--	--

Website: <http://www.thirumalaichemicals.com>

The present product data sheet has the purpose of inform the clients on the quality of our product. The data herein is based on our present best knowledge. For a better suitability of the product for your particular purpose, tests are recommended prior product use. Our clients must be sure that the present data sheet hasn't been changed or replaced by a newer edition.
